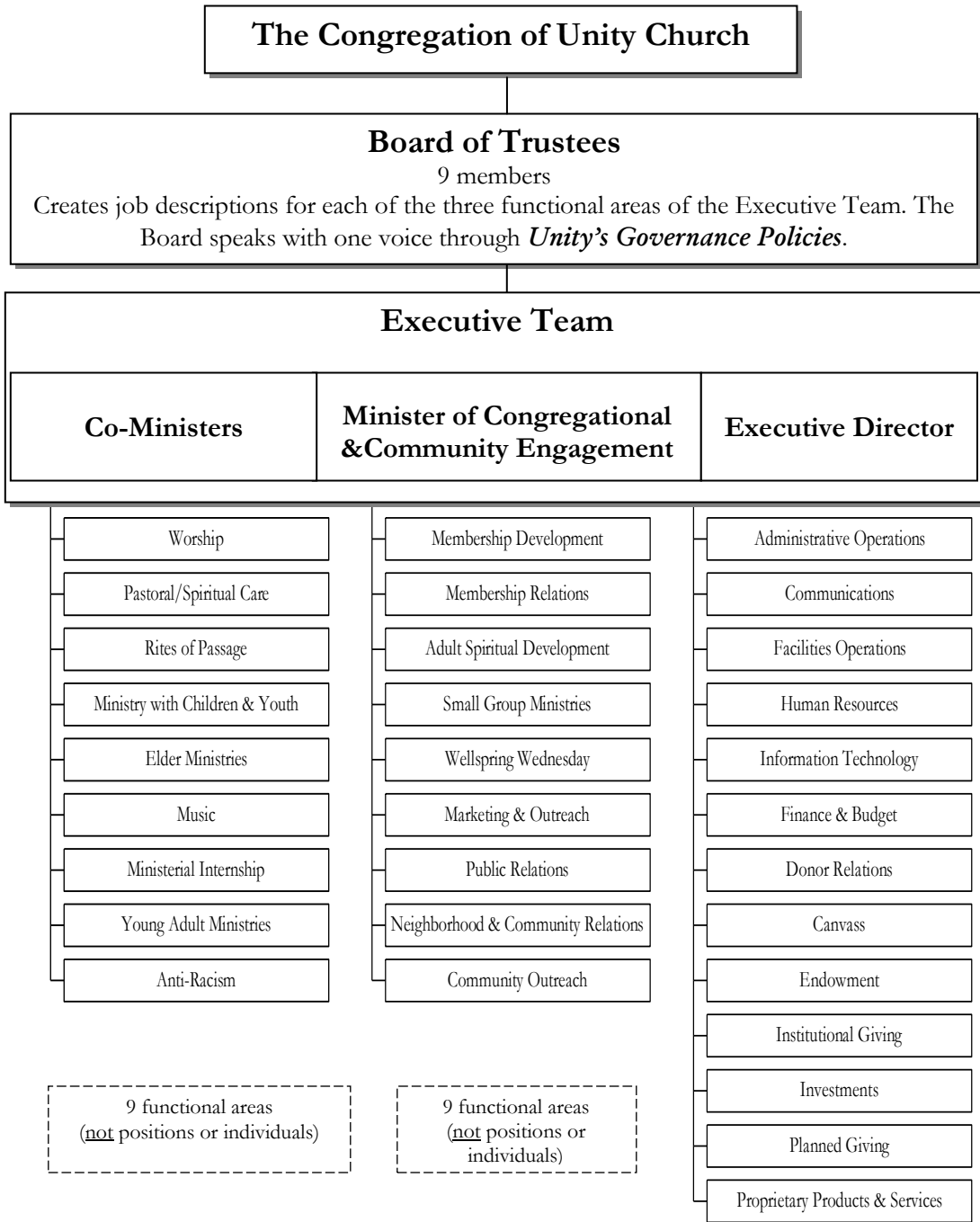


**UNITY CHURCH-UNITARIAN
ORGANIZATIONAL STRUCTURE**
Revised: July 2014



Executive Team members work collaboratively (shared ministry) moving forward towards fulfilling the strategic plan, mission, and ends. The Team operationalizes Board policy.

Each functional area uses a combination of paid staff and lay ministry teams to support its work.

9 functional areas
(not positions or individuals)

9 functional areas
(not positions or individuals)

13 functional areas
(not positions or individuals)