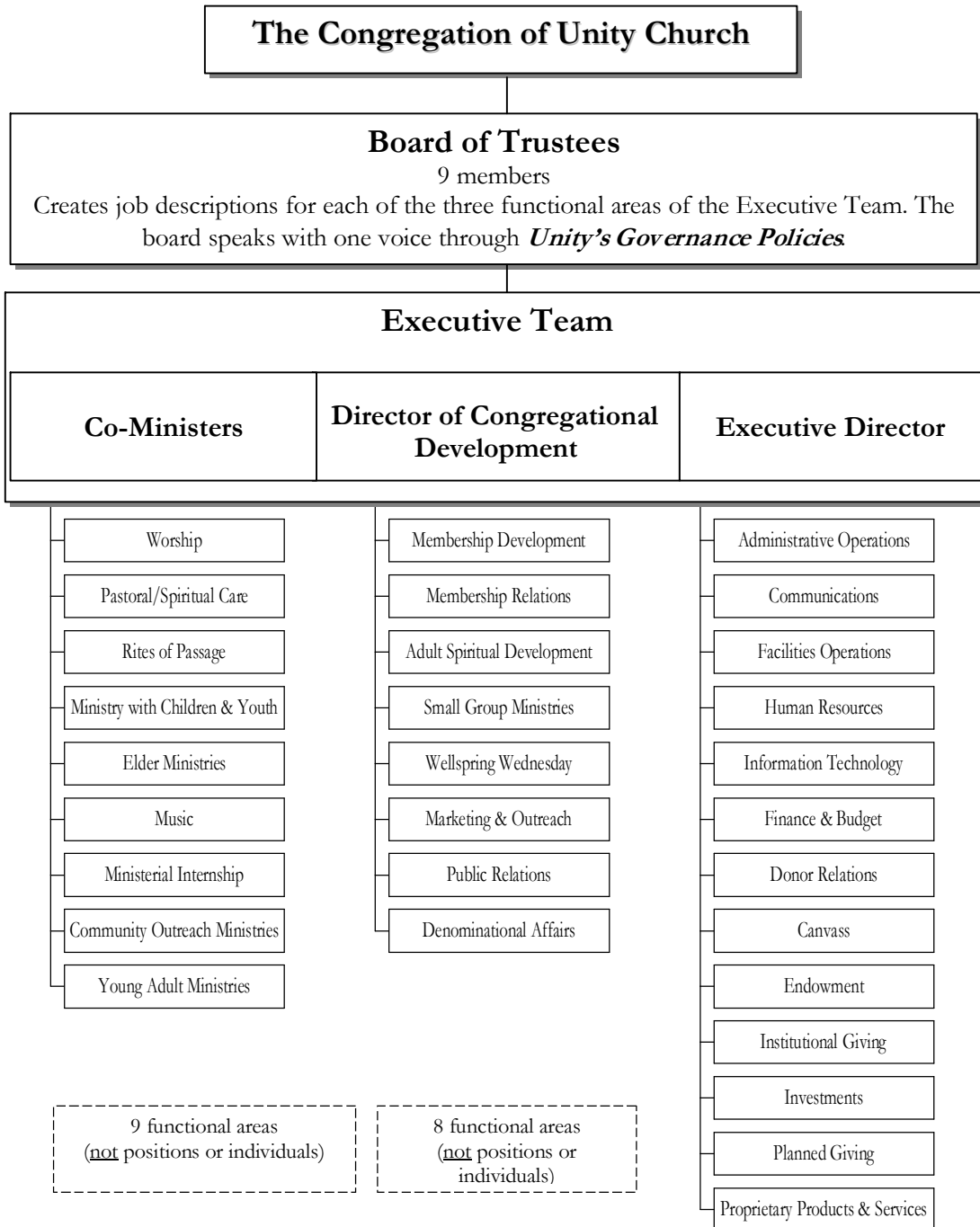


**UNITY CHURCH-UNITARIAN  
ORGANIZATIONAL STRUCTURE**  
Revised: February 2008



Executive Team members work collaboratively (shared ministry) moving forward towards fulfilling the strategic plan, mission, and ends. The Team operationalizes board policy.

Each functional area uses a combination of paid staff and lay ministry teams to support its work.